



# FLEXLENS<sup>®</sup> ARC

Atypical Refractive Correction

## CUSTOM SOFT CONTACT LENS FOR IRREGULAR CORNEAS

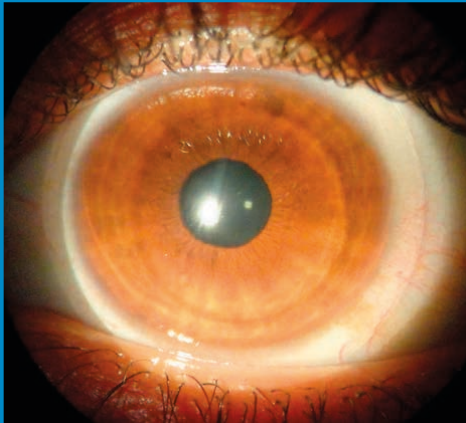
The Flexlens ARC, Atypical Refractive Correction, is a custom soft lens design that fits like a regular toric contact lens.

With no need to worry about peripheral curves or any other parameter that may complicate the fit, the ARC is easy to fit, thus reducing chair time.

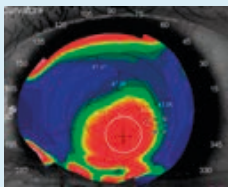
This lens is indicated for the visual correction of various ocular conditions including keratoconus, pellucid marginal degeneration, corneal transplants, post refractive surgery and/or any irregular cornea conditions.

### PARAMETERS

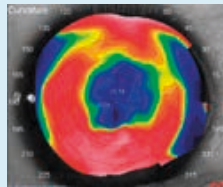
<b>Base Curve</b>	6.0mm to 8.7mm in 0.1mm steps
<b>Fitting Curve</b>	8.6 Standard
<b>Diameter</b>	13.0mm to 16.0mm in 0.5mm steps
<b>Power</b>	+20.00D to -20.00D
<b>Cylinder</b>	-0.50D to -10.00D in 0.25 D steps
<b>Axis</b>	1° to 180° in 1 degree steps
<b>Prism</b>	1.50 standard with 2.00 available
<b>Thickness</b>	0.30mm and 0.50mm



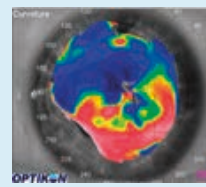
The Flexlens® ARC utilizes a standard back surface fitting curve precise axis, cylinder, and an enhanced center thickness to stabilize the correction over an aberrated cornea. Cylinder powers ranging from -0.75 up to a -10.00 are available with prism ballast to reduce lens rotation. A range of base curves and center thicknesses can be manipulated to successfully fit a wide patient base.



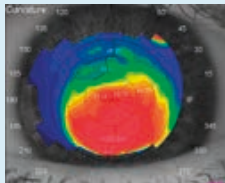
Keratoconus



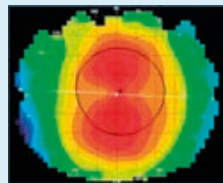
Post Surgical



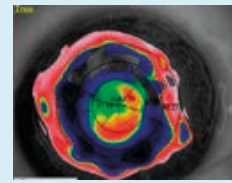
PMD



Kerato-Globus



Astigmatism



Cornea Transplant



Image courtesy of Dr. Augusto Rossé, Santiago, Chile.

Lasered V-mark showing lens rotation.  
(mark should be positioned at 6 o'clock)

# TROUBLESHOOTING

Problem	1st Change	2nd Change
Too little or no movement	Flatten BC 0.3mm	Decrease diameter 0.5mm
Excessive movement	Steepen BC 0.3mm	Increase diameter 0.5mm
Central air bubble	Flatten BC 0.3mm	Decrease diameter 0.5mm
Lend fold	Steepen BC 0.3mm	Increase diameter 0.5mm
Excessive touch	Steepen BC 0.3mm	
Unstable over-refraction	Flatten BC 0.3mm	
Unstable lens rotation	Steepen BC 0.3mm	Increase diameter 0.5mm
BCVA not achieved with 0.30 thick lens	Go to 0.50 thick lens	Increase prism to 2.00
		Decrease diameter 0.5mm