

TITAN™

LARGE DIAMETER

LARGE DIAMETER CONTACT LENS FOR IRREGULAR CORNEAS

The Titan™ lens is indicated for the management of irregular cornea conditions. It is a large diameter gas permeable lens with an aspheric posterior surface. This posterior surface keeps the large diameter lens from becoming too tight in the peripheral and mid-peripheral area of the cornea. More than one aspheric value of eccentricity is available with the Titan design.

LENS PARAMETER AVAILABILITY

Base Curve	50.00D (6.75) to 34.00D (9.93)
Diameter	11.3 to 12.3 (0.1mm steps)
Power	+60.00D to -60.00D
Edge Lift	Steep, Medium, Flat
Material	Recommended in Optimum Extra

DIAGNOSTIC SET PARAMETERS

Base Curve	47.00D (7.18) to 35.00D (9.64)
Diameter	11.8, 12.3
Power	+5.00D to Flat
Edge Lift	Medium, Flat
Material	Recommended in

**OPTIMUM
EXTRA**

An extended 13 lens diagnostic set is available in 12.3 diameter with powers ranging from +5.00D to -3.00D.

FOR SIMPLE MANAGEMENT OF IRREGULAR CORNEAS

- Large diameter lens
- With less lid interaction and movement this is often more comfortable than other GP designs
- Spherical optical zone provides optimal visual acuity

Patients who would benefit:

- **Irregular corneas associated with:**
 - Centration Problems – spherical, oblique, and ATR corneas
 - Post Surgical – RK, Lasik, PKP, Intacs, and Ecstasia
 - Corneal Dystrophies – KC & PMD
 - Corneal Trauma – Scars due to injury
- **Patients with regular astigmatism:**
 - Especially those that experience variable vision with soft and soft toric lenses

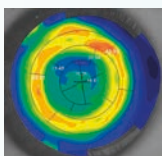
Reasons to fit your patient with Titan Large Diameter:

- With less lid interaction and lens movement, this lens is often more comfortable than other GP designs
- Better lens centration is not a problem when fitting Titan
- The three aspheric edge lifts with each base curve provide practitioners the flexibility needed to achieve a successful fit

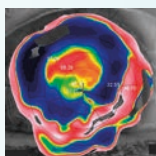
Tips for a successful adaptation:

- Use diagnostic lenses to ensure best fit
- The goal is to equally distribute the mass of the lens avoiding areas of vault and/or bearing of the corneal surface
- Although the lens is large, appropriate lens movement and tear exchange is always necessary to maintain corneal health

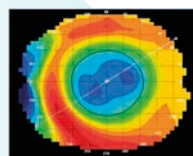
Topographies where the Titan should be considered:



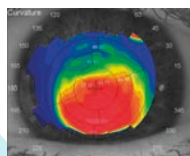
PRK



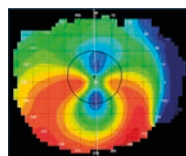
PKP



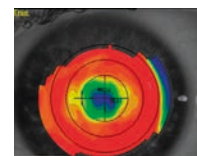
LASIK



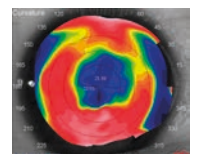
CONOS
ELEVADOS



PMD



RK



RK