

A close-up photograph of a person's face, focusing on their eye. The eye is strikingly colorful, with a blue and green iris. The eyelids are heavily made up with bright yellow and orange eyeshadow, and a white, winged eyeliner. The person has dark hair and is looking slightly to the left. The background is a soft, out-of-focus yellow and orange gradient.

SPECTRUM
INTERNATIONAL

SPECTRUM
color

SPECTRUM color

Multiple curves and high transparent materials helps the vision stay clear

High moisture, smooth tear circulation

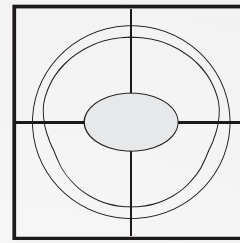
Long-lasting comfort to wearers

SPECTRUM Color brand contact lenses offer long-lasting comfort to wearers. Our lenses are manufactured with classic polymacon material, which is still widely recognized for its durable, dependable performance across all environments.

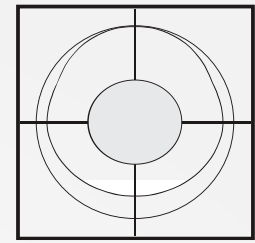
Advanced “in-toric” applied design reduces axis rotation. Circle “zone” gives superior visual correction. Toric lenses limitless optical range, cylinder and axis give wearers an individually, “PRECISE FIT”. The superior prism ballast design creates great visual acuity.

Securing visual clarity with a wide optical zone

The optical zone, formed by a sophisticated design, enables wearers to catch wide views from every angle.



Other Brand



SPECTRUMcolor

SPECTRUMcolor^{Rx}

Material	62% polymacon, 38% water content
Base Curve	8.60
Diameter	14.20mm
Graphic Color	Custom make
Power Range	0.00 to ±25.00D 0.00 to ±6.00D (0.25D steps) ±6.50 to ±25.00D (0.50D steps)
Cylinder Power	-0.50 to -7.00D (0.25D steps)
Axis	5° to 180° (in 5° steps)
Axis Marks	Three lines indication at 6 o'clock
Nominal Centre Thickness	0.105mm @-3.00D
Dk/t @-3.00D	9.30x10 ⁻⁹ (cm/s)(mLO ₂ /ml.mmHg)
Oxygen Permeability Dk@35°C	9.77x10 ⁻¹¹ (cm ² /s)(mLO ₂ /ml.mmHg)
Standard Pack Size	Vial: 1 lens

*More colors available
**We can design the color you require.



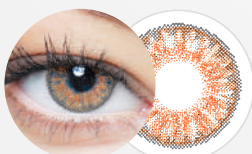
SPECTRUMcolor^{Rx}

SPECIAL

Material	62% polymacon, 38% water content
Base Curve	7.80 to 9.00 (0.10mm steps)
Diameter	13.70mm a 14.60mm (0.10mm steps)
Power Range	0.00 to ±25.00D 0.00 to ±6.00D (0.25D steps) ±6.50 to ±25.00D (0.50D steps)
Cylinder Power	-0.50 to -7.00D (0.25D steps)
Axis	5° to 180° (in 5° steps)
Axis Marks	Three lines indication at 6 o'clock
Nominal Centre Thickness	0.080mm @-3.00D (Spheric) 0.130mm @-3.00D (Toric)
Standard Pack Size	Vial: 1 lens



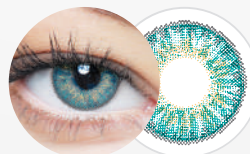
3-tone color lens



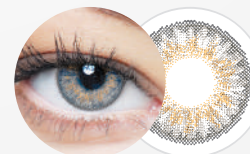
Tangerine
(CL365N)



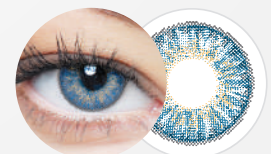
Olive
(CL370N)



Turquoise
(CL304N)



Gray
(CL301N)



Dusk Blue
(CL367N)

Our high quality corrective lens gives you the clean and clear vision enhancing color lens



Material	Hioxifilcon A, 58% H ₂ O
Base Curve	8.60
Diameter	14.20 mm
Power Range	-10.00 to +6.00D -0.50 to -6.00D (0.25D steps) -6.50 to -10.00D (0.50D steps) +0.50 to +4.00D (0.25D steps) +4.50 to +6.00D (0.50D steps)
Packing Type	10 Lenses
Replacement	Daily



Light Blue
(CL240)



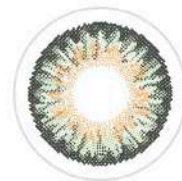
Gray
(FL331)



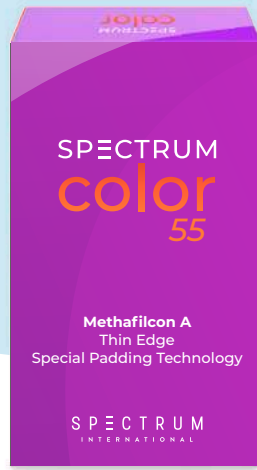
Hazel
(FL332)



Blue
(FL333)



Green
(FL334)



 **Quarterly**

Material	Methafilcon A, 55% H ₂ O
Base Curve	8.60
Diameter	14.20 mm
Power Range	-10.00 to +6.00D -0.50 to -6.00D (0.25D steps) -6.50 to -10.00D (0.50D steps) +0.25 to +4.00D (0.25D steps) +4.50 to +6.00D (0.50D steps)
Packing Type	2 Lenses
Replacement	Quarterly



Tangerine
(FL301N)



Violet
(FL302N)



Emerald
(FL303N)



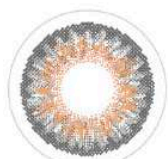
Turquoise
(FL304N)



Dusk Blue
(FL305N)



Brown
(FL306N)



Gray
(FL307N)



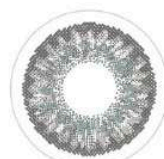
Green
(FL308N)



Marigold
(FL309N)



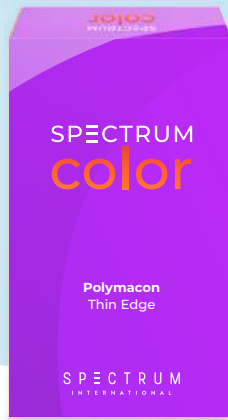
Serenity
(FL310N)



Cloud
(FL311N)



Olive
(FL312N)



 **Quarterly**

Material	Polymacon, 38% H ₂ O		
Base Curve	8.60	Diameter	14.20 mm
Power Range	-10.00 to +6.00 -0.00 to -6.00 (0.25D steps) -6.50 to -10.00 (0.50D steps) +0.50 to +6.00 (0.50D steps)		
Pack	2 Lenses	Replacement	Quarterly



Light Blue
(CL134N)



Brown
(CL135N)



Green
(CL136N)



Violet
(CL137N)



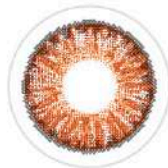
Aqua Blue
(CL138N)



Gray
(CL139N)



Gray
(CL301N)



Brown
(CL302N)



Violet
(CL303N)



Turquoise
(CL304N)



Green
(CL305N)



Marigold
(CL364N)



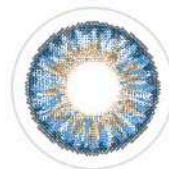
Tangerine
(CL365N)



Emerald
(CL366N)



Dusk Blue
(CL367N)



Serenity
(CL368N)



Cloud
(CL369N)



Olive
(CL370N)

**More colors available*

***We can design the color you require.*



Spectrum Color Halloween (Daily)

Material	Polymacon, 38% H ₂ O		
Base Curve	8.60	Diameter	14.20 mm
Power Range	0.00 to -6.00D (0.25D steps)		
Packing Type	2 Lenses	Replacement	Daily



Black Out
(FN101N)



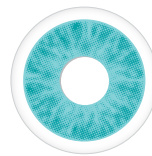
Red Vampire
(FN102N)



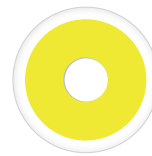
White Out
(FN103N)



Angelic White
(FN104N)



Blue Walker
(FN105N)



Zombie Yellow
(FN106N)

Spectrum Color Halloween (Monthly)

Material	Polymacon, 38% H ₂ O		
Base Curve	8.60	Diameter	14.20 mm
Power Range	0.00		
Packing Type	2 Lenses	Replacement	Monthly



Angelic Blue
(FN002N)



Angelic Red
(FN004N)



Black out
(FN009N)



Green Reptile
(FN023N)



Blue Cat
(FN012N)

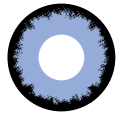


Red Vampire
(FN044N)





Manson
(FN032N)



Lestat
(FN030N)



Gaara
(FN047N)



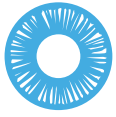
RedCat
(FN042N)



Reaper
(FN041N)



Target
(FN059N)



Shiva
(FN061N)



Spider Web
(FN053N)



Yellow Cat
(FN069N)



White Out
(FN067N)



Temptress(Pink)
(FN060N)



Zombie Red
(FN072N)



Zombie Green
(FN071N)



White Cat
(FN066N)



Red Wolf
(FN046)



Diameter 14.50 mm



Angelic Yellow
(FN005)



Angelic Green
(FN003)



Froggy
(FN019)



Green Ghoul
(FN022)



Hellraiser
(FN027)

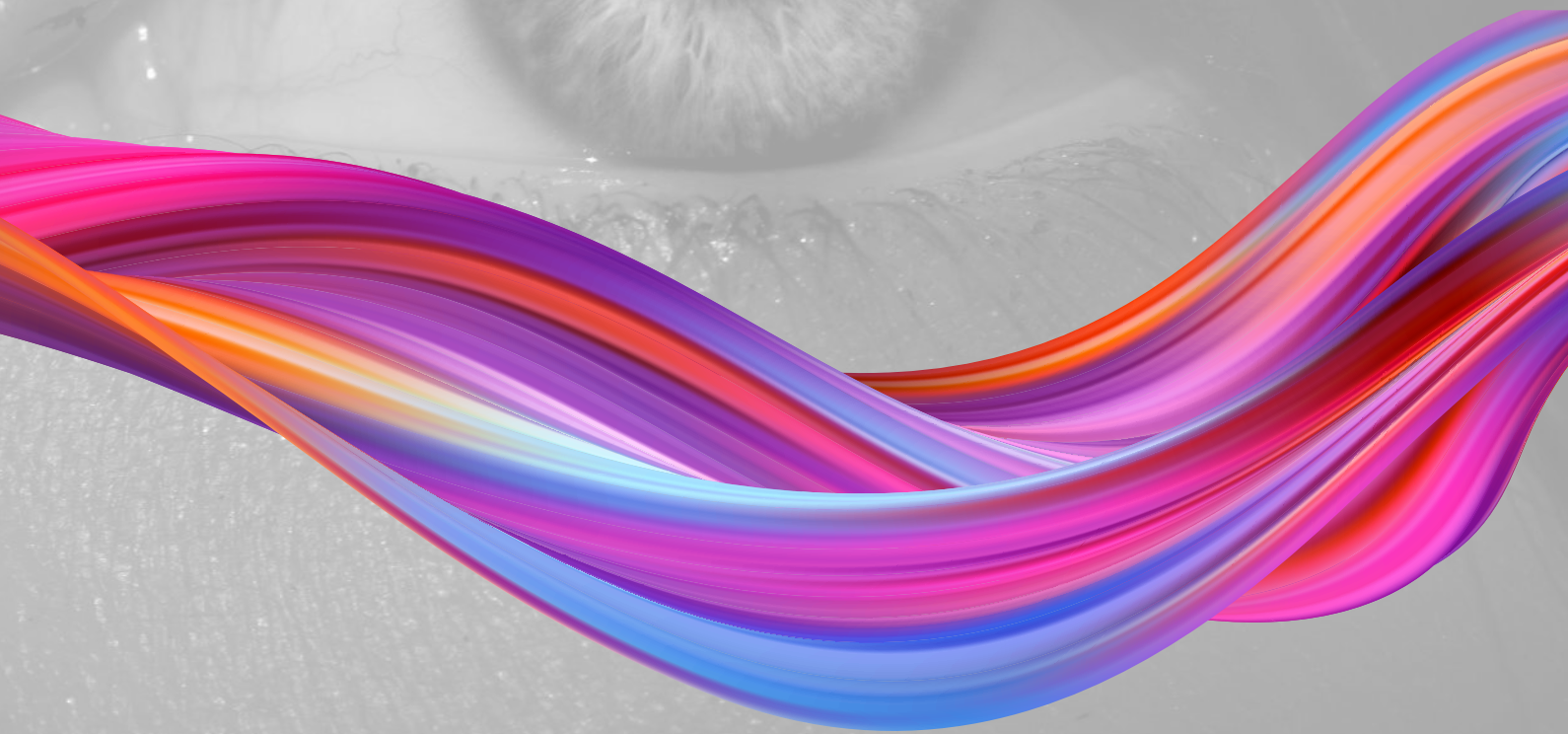


Zombie Blue
(FN070)



S P E C T R U M

I N T E R N A T I O N A L



✉ sales@spctinternational.com

☎ +1 (470) 208-7030



www.spctinternational.com